



# **GIGABIT USB 2.0 ETHERNET CONVERTER**



**User's Manual**

**DN-10150**

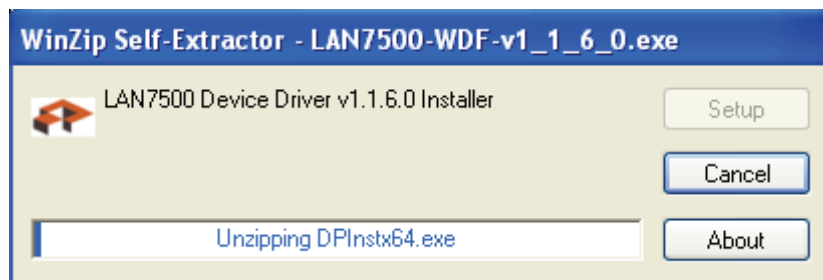
## Driver Installation (Windows XP)

Follow the steps below to install Window XP driver of Gigabit USB 2.0 Ethernet Converter:

1. Power on your computer and make sure that the USB port is enabled and working properly.
2. During installation, please don't link Gigabit USB 2.0 Ethernet Converter with your computer.
3. Double click 'LAN7500-WDF setup.exe, then it will start install



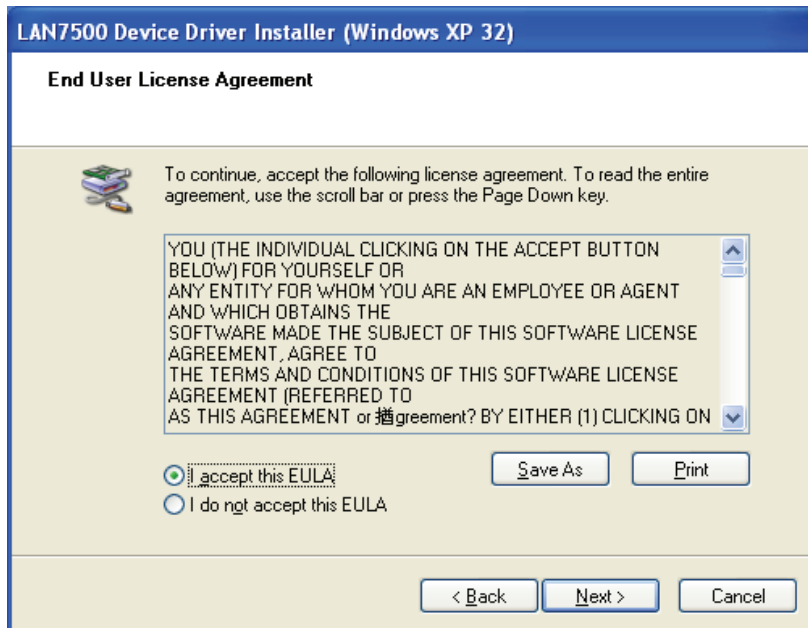
4. It will show you the below hint during installation



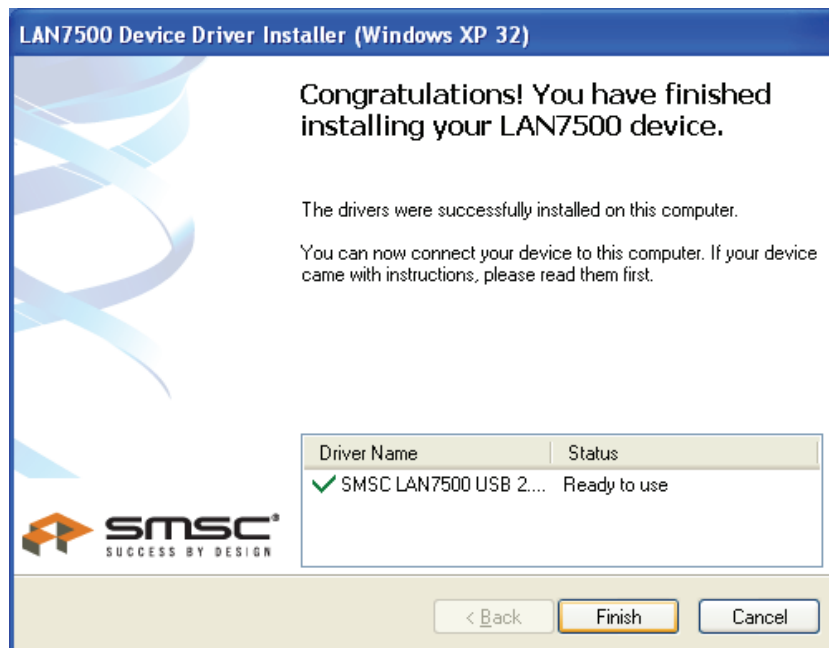
5. Click "Next" to continue installation,



6. Click "I Accept" and "Next" to continue installation. Refer to the below frame:



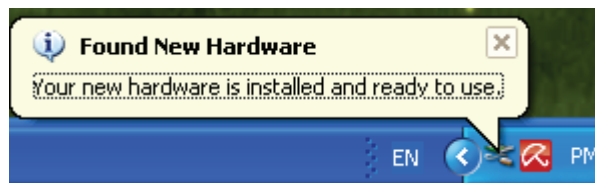
7. Click "Finish"



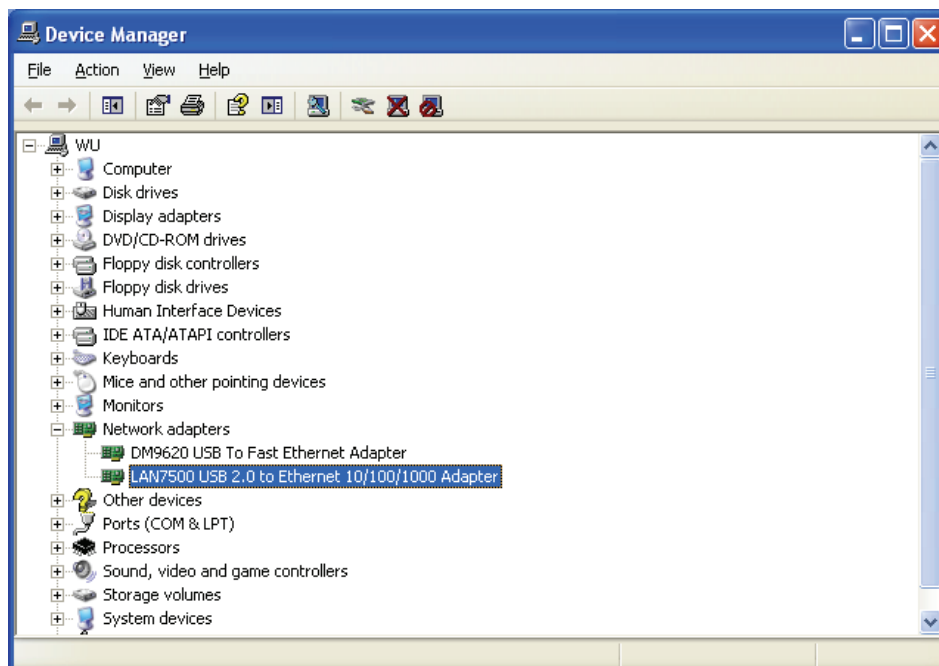
8. After installation, please connect the product of Gigabit USB 2.0 Ethernet to the USB Port, system will detect it. Please refer to the below frame



9. If it shows the below interface, it means the installation is succeeded



10. Check the "Device Manager": You can find "LAN 7500 USB2.0 to Ethernet 10/100/1000 Adapter"



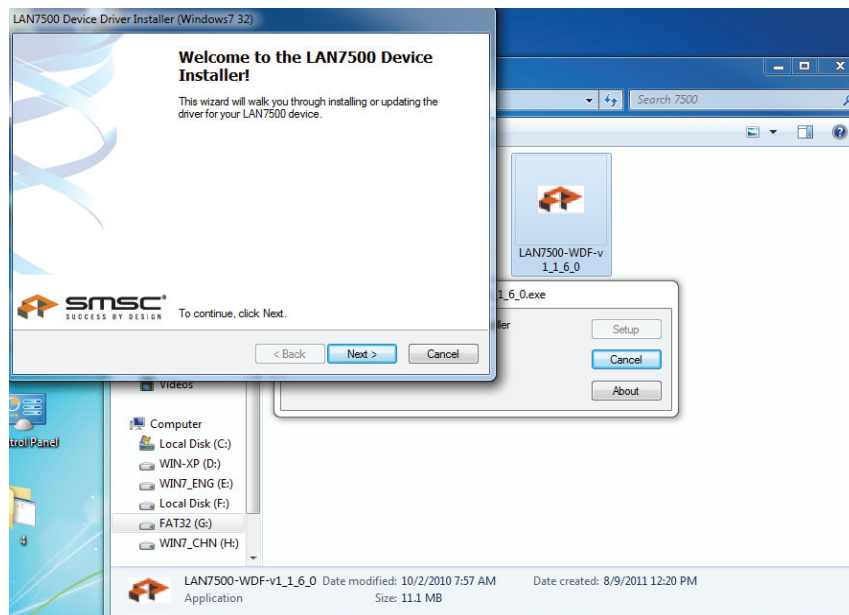
## Driver Installation (Windows 7)

Follow the steps below to install Window 7.0 driver of Gigabit USB 2.0 Ethernet Converter:

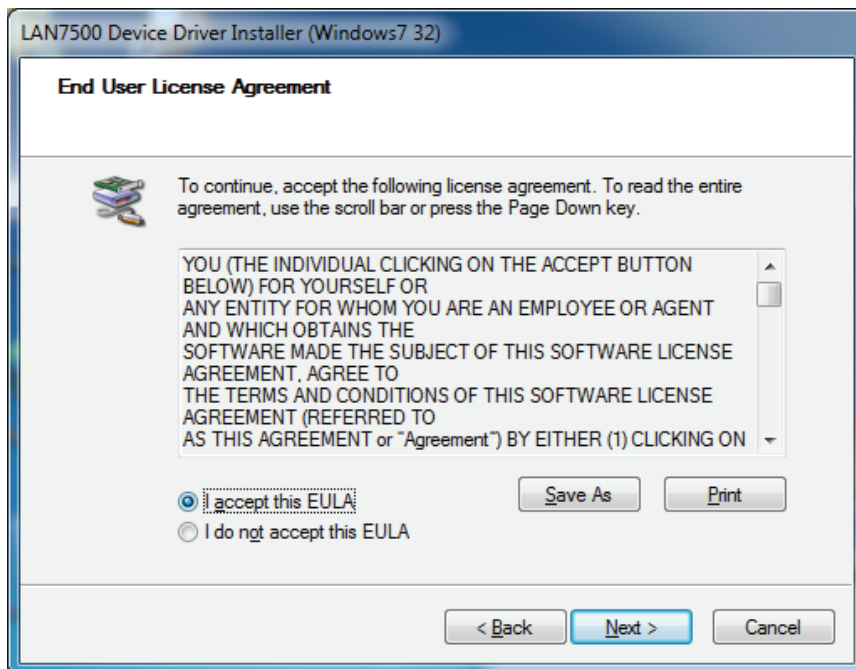
1. Power on your computer and make sure that the USB port is enabled and working properly.
2. During installation, please don't link Gigabit USB 2.0 Ethernet Converter with your computer.
3. Double click 'LAN7500-WDF setup.exe', then it will start install.



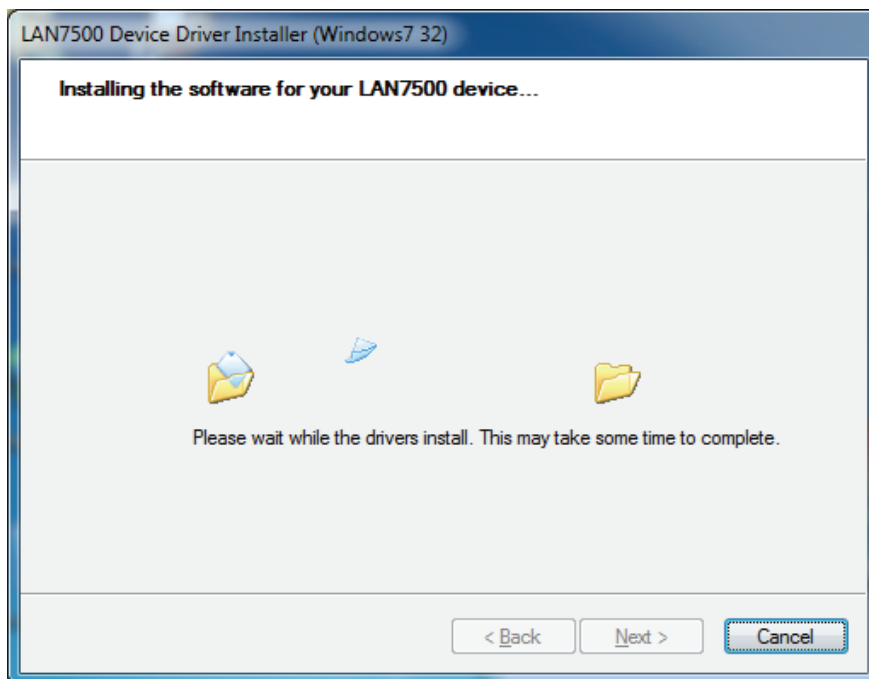
4. Click "Next" to continue installation



5. Click "I Accept" and "Next" to continue installation. Refer to the below frame:



6. It will show you the below hint during installation



7. Click “Finish”



8. After installation, please connect the product of Gigabit USB 2.0 Ethernet to the USB Port, system will detect it.

9. Check the “Device Manager”. You can find “LAN 7500 USB2.0 to Ethernet 10/100/1000 Adapter”

